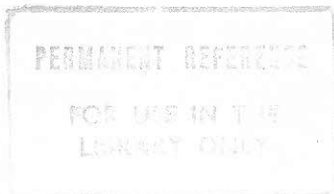


C
331
ADA

LABOR EXCHANGE SYSTEM IN SINHALESE AGRARIAN

SETTLEMENTS : A CASE STUDY



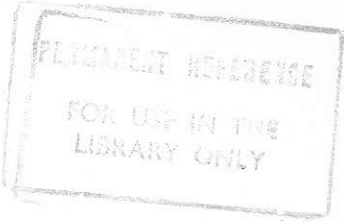
by

Akira Adachi

405477 X

This thesis is submitted in fulfilment of the requirements for the Degree of Master of Arts at the University of Peradeniya, Sri Lanka.

September, 1986



ABSTRACT

This study examines reciprocal labor exchange in the peasant agricultural settlements in Sri Lanka. It argues that labor exchange behavior is a maximization process in the peasant agriculture so it must be understood by the individual decision making process regarding labor exchange and complementary labor mobilization.

Two key problems of labor exchange are examined in the study. They are the patterns of mediation between demand and supply of exchange labor at the individual level and the flow of exchange labor in the locality. This study discusses them by focussing especially on exploration for exchange labor in different degree of tolerance of imbalance in labor exchange and explores for some implications in the theory of "balanced reciprocity".

